

LiDE 110

Canon
Delighting You Always

- 2400dpi CIS Scanning
- USB Powered
- Auto Scan Mode
- 4 EZ Buttons

Quality

Simplicity



CanoScan

THE CANOSCAN RANGE

LiDE 210

Canon
Delighting You Always

- 4800dpi CIS Scanning
- USB Powered
- Auto Scan Mode
- 5 EZ Buttons

Creation

Acceleration



CanoScan

THE CANOSCAN RANGE

CANOSCAN RANGE

The CanoScan Range

Two Beautiful New Machines

In A Range Of Scanners Just For You!

Two exciting new scanners now grace the impressive CanoScan lineup: the quick, high-quality LiDE 210 and the compact, highly versatile LiDE 110. Beautifully designed and featuring a host of Canon's most advanced optical imaging technologies, this remarkable duo makes high-speed, high-resolution reflective scanning a breeze. But whatever your scanning requirements – from ultra-high-resolution film scans to space-saving vertical scanning – the CanoScan range has a stylish, easy-to-use, superb-quality scanner just for you.



9000F



5600F



LiDE 700F



LiDE 210



LiDE 110

CanoScan LiDE 210

High-Speed, High-Resolution Scans From A Stylishly Slim CIS Scanner

Fast, easy to operate and conveniently compact. The CanoScan LiDE 210 is all this and more. With scanning resolutions up to 4800dpi, quality is superb. You can scan an A4 color document at 300dpi in just 10 seconds. 5 EZ buttons take care of the most frequently performed tasks – including advanced PDF filing. And with Auto Scan Mode, you make perfect scans at the touch of a button. Moreover, it's highly energy efficient as it draws power via a single USB connection.

SCAN approx. **10** sec. Colour/A4/300dpi
4800 ×4800dpi
48-bit Input/Output
Hi-Speed USB
5 EZ Buttons
PDF
19200 dpi by Software

CanoScan LiDE 110

Excellent Performance From a Compact, Stylish, Easy-To-Use Scanner

At up to 2400dpi, your scans are precise and highly detailed. And you get them done quickly – it takes just 16 seconds to scan an A4 color document at 300dpi. The Advanced Z-Lid makes it easy to scan thick sources, and 4 EZ buttons make it easy to scan everything else. With Auto Scan Mode, you get the optimal scan settings at the touch of a button. And a single USB cable takes care of both power and connectivity.

SCAN approx. **16** sec. Colour/A4/300dpi
2400 ×4800dpi
48-bit Input/Output
Hi-Speed USB
4 EZ Buttons
PDF
19200 dpi by Software

Space-Saving Design – Vertical Scanning



Upright Scanning

The advanced, clip-on scanner stand allows you to operate the LiDE 210 in a vertical position, so you need minimal space to scan. But regardless of where you place this sleek, stylish scanner, it looks amazing from any angle.



Beautifully Designed – Compact & Efficient

The LiDE 110 has a sophisticated, two-tone black finish that complements any interior. Gently curved button faces, strategically placed, make operation a pleasure.



CanoScan 9000F

Top-Of-The-Line, High-Resolution CCD Film, Photo & Document Scanner

- Scans 35mm film (mounted slides and film strips) and 120-format film
- 7 EZ buttons
- Auto Scan Mode
- Automatic dust & scratch reduction for film scans (FARE Level 3)
- Integrated power supply

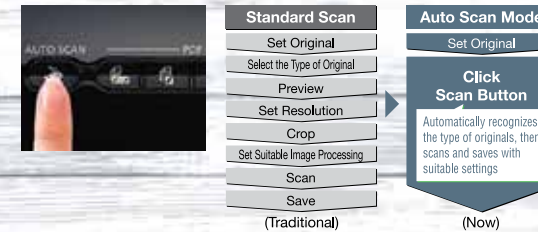
SCAN approx. **7** sec. Colour/A4/300dpi
9600 × 9600dpi
48-bit Input/Output
   **19200** dpi by Software



Shared Features & Functions

Intelligent One-Pass Scan Workflow – Auto Scan Mode

Instead of having to go through numerous painstaking steps to get the correct settings for high-quality scans, Auto Scan Mode automatically recognizes the document type and then makes the optimal scan and save settings.



Convenient One-Touch Scanning – EZ Buttons

Perform the most frequent scanning tasks at the touch of a dedicated button. The PDF button quickly creates a PDF file; some models have multiple PDF buttons for more advanced functions. AUTO SCAN starts the Auto Scan Mode; COPY prints scanned data; and the E-MAIL button adjusts data size and attaches it to an e-mail.



CanoScan 5600F

High-Speed, High-Resolution CCD Scanner For Film, Photos & Documents

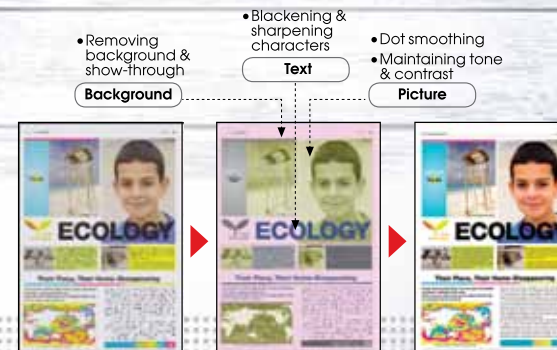
- Scans 35mm film (mounted slides and film strips)
- 7 EZ buttons
- Auto Scan Mode
- Automatic dust & scratch reduction (reflectives only)
- Integrated power supply

SCAN approx. **11** sec. Colour/A4/300dpi
4800 × 9600dpi
48-bit Input/Output
   **19200** dpi by Software



Smart Document-Scan Optimization – Auto Document Fix

Documents are brought to their ideal state after being analyzed on an area-by-area basis. Image correction includes sharpening and darkening text, improving the background, removing show-through, maintaining tone and contrast, and smoothing dots.



CanoScan LiDE 700F

Stylishly Compact, Ultra-High-Resolution CIS Film, Photo & Document Scanner

- Scans 35mm film (film strips only)
- 4 EZ buttons
- Automatic dust & scratch reduction (reflectives only)
- Lid opens 180° for scanning bulky sources
- 3-Way scanning: horizontal, vertical & upright

SCAN approx. **12** sec. Colour/A4/300dpi
9600 × 9600dpi
48-bit Input/Output
   **19200** dpi by Software



Scan Thick Originals – Advanced Z-Lid



Bulky originals up to 20mm thick can be scanned quickly and easily. The Advanced Z-Lid rises straight up so it always remains parallel to the scanning surface.



Exceptional Color Control – Dual Color Gamut Processing (DCGP)



DCGP ensures advanced color accuracy by evaluating several factors – such as the brightness and contrast of the original – and then creating the ideal balance between color differences and gradation.

Revive Your Images – Automatic Dust & Scratch Reduction

The dust and scratch marks that can mar photos and other images are automatically reduced. Problems caused by fading, backlighting and graininess are also corrected.

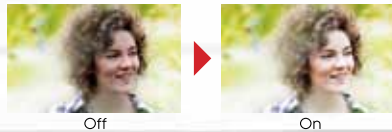
Convenient, One – Cable Connection – USB Powered



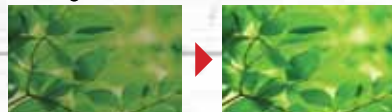
CanoScan's LED Indirect Exposure (LiDE) technology is so energy efficient, it only takes a single USB connection to power the scanner.



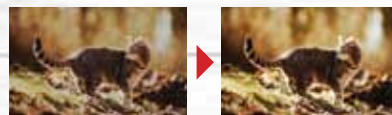
Backlight Correction



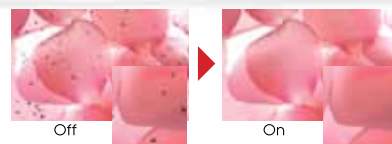
Fading Correction



Grain Correction



Dust & Scratch Removal



Environment Friendly – Low-Cost, Energy-Efficient Scanning



Power-efficient, 3-color (RGB) / White LED illumination technology requires very little energy, which lowers operation costs. CanoScan scanners also conform to the EU RoHS directive and the international Energy Star Program.



Create & Organize Multi-Page Documents Easily – Advanced PDF Filing

Categorization

Scanned images and documents are automatically placed into categories; create searchable, multi-page files or add pages to existing files.



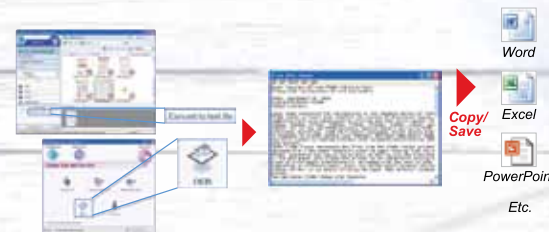
Stitch Assist

Scan A3-sized originals by “stitching” together the different scanned sections.



OCR Text Data Conversation

Advanced Optical Character Recognition (OCR) technology places text from a scanned image into Windows Notepad. Text can be edited, copied, saved or emailed.



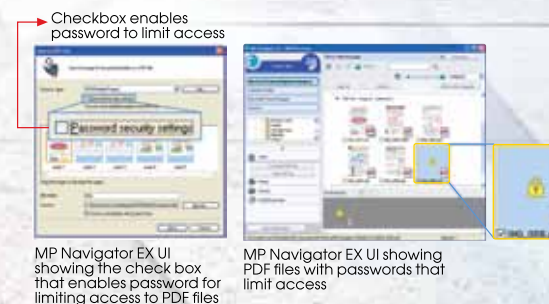
Gutter Shadow Elimination

Remove unsightly gutter shadows that can occur when scanning books and magazines.



Document Security

Restrict or limit access to files via password encryption (Windows only).



Document Orientation

Automatically rotates documents so that they have the correct orientation; also corrects document slant.



Specifications



CanoScan	9000F	5600F	LiDE 700F
Scanner Type	Flatbed	Flatbed	Flatbed
Scanner Element	CCD 12-line color	CCD 6-line color	CIS (Color Contact Image Sensor)
Light Source	White LED	White LED / Cold cathode fluorescent lamp	3-color (RGB) LED
Optical Resolution*1	9600 x 9600dpi (film) 4800 x 4800dpi (reflective documents)	4800 x 9600dpi	9600 x 9600dpi (film) 4800 x 4800dpi (reflective documents)
Selectable Resolution	25 – 19200dpi	25 – 19200dpi	25 – 19200dpi
Scanning Bit Depth			
Grayscale	48-bit input (16-bit for each color) 16-bit (film scanning only) or 8-bit output	48-bit input (16-bit for each color) 16-bit (film scanning only) or 8-bit output	48-bit input 16-bit (film scanning only) or 8-bit output
Color	48-bit input (16-bit for each color) 48 or 24-bit output (16-bit or 8-bit for each color)	48-bit input (16-bit for each color) 48 or 24-bit output (16-bit or 8-bit for each color)	48-bit input (16-bit for each color) 48 or 24-bit output (16-bit or 8-bit for each color)
Preview Speed*2			
Color A4 300dpi	Approx. 3sec	Approx. 3sec	Approx. 9sec
Scan Speed*3			
Color A4 300dpi	Approx. 7sec	Approx. 11sec	Approx. 12sec
Scanning Speed*4 (Reflective)			
Grayscale, B&W	12.1msec / line (4800dpi) 12.1msec / line (2400dpi) 6.1msec / line (1200dpi) 1.5msec / line (600dpi) 1.2msec / line (300dpi)	14.6msec / line (4800dpi) 14.6msec / line (2400dpi) 9.7msec / line (1200dpi) 3.7msec / line (600dpi) 1.8msec / line (300dpi)	11.3msec / line (4800dpi) 5.9msec / line (2400dpi) 2.9msec / line (1200dpi) 1.8msec / line (600dpi) 2.3msec / line (300dpi)
Color	12.1msec / line (4800dpi) 12.1msec / line (2400dpi) 6.1msec / line (1200dpi) 1.5msec / line (600dpi) 1.2msec / line (300dpi)	14.6msec / line (4800dpi) 14.6msec / line (2400dpi) 9.7msec / line (1200dpi) 3.7msec / line (600dpi) 1.8msec / line (300dpi)	33.5msec / line (4800dpi) 33.8msec / line (2400dpi) 8.6msec / line (1200dpi) 4.5msec / line (600dpi) 2.4msec / line (300dpi)
Scanning Speed*4 (Film)	1.5 – 48.4msec/line	1.8 – 58.4msec/line	2.8 – 223.9msec/line
Color, Grayscale, B&W			
Maximum Document Size	A4 / Letter: 216 x 297mm	A4 / Letter: 216 x 297mm	A4 / Letter: 216 x 297mm (8.5 x 11.7in.)
Scanner Driver	TWAIN / WIA (Windows 7 / XP / Windows Vista)	TWAIN / WIA (Windows 7 / XP / Windows Vista)	TWAIN / WIA (Windows 7 / XP / Windows Vista)
Film Type / No. of Frames			
35mm strip	12	6	1
35mm slide	4	4	–
120 format film	max. 6 x 22cm (filmstrip only)	–	–
Effective Scanning Area / Pixels			
35mm film*5	Area 24 x 36mm Pixels*7 9070 x 13606	Area 24 x 36mm Pixels*7 4535 x 6803	Area 24 x 36mm Pixels*7 9071 x 13606
120mm film*6	Area 56 x 220mm Pixels*7 21166 x 83150	Area – –	Area – –
Scanner Buttons (EZ Buttons)	7 buttons (PDF x 4, AUTO SCAN, COPY, E-MAIL)	7 buttons (PDF x 4, COPY, SCAN, E-MAIL)	4 buttons (COPY, SCAN, PDF, E-MAIL)
Other Features	FARE Level 3	–	3-Way position, 180° open
Interface	USB 2.0 Hi-Speed	USB 2.0 Hi-Speed	USB 2.0 Hi-Speed
Operating Range			
Temperature	10 to 35°C (50 to 95°F)	10 to 35°C (50 to 95°F)	5 to 35°C (41 to 95°F)
Humidity	10 to 90% RH (20 to 80% RH for film scanning), without condensation formation	10 to 90% RH (20 to 80% RH for film scanning), without condensation formation	10 to 90% RH (20 to 80% RH for film scanning), without condensation formation
Power Supply	AC 100-240V, 50/60 Hz	AC 100-240V, 50/60 Hz	Supplied via USB port
Power Consumption			
Maximum during operation	Approx. 15W	Approx. 19W	Approx. 2.5W
Stand-by	Approx. 0.9W	Approx. 3.2W	Approx. 1.5W
OFF (USB bus power model; Suspend)	Approx. 0.5W	Approx. 0.4W	Approx. 11mW
Environment (Plan)			
Regulation	RoHS (EU), WEEE (EU)	RoHS (EU), WEEE (EU)	RoHS (EU), WEEE (EU)
Eco-Label	Energy Star	Energy Star	Energy Star
Dimensions (W x D x H)	Approx. 270 x 480 x 111mm	272 x 419 x 97mm	292 x 409 x 44mm
Weight	Approx. 4.6kg	Approx. 4.3kg	Approx. 2.1kg

CanoScan	LiDE 210	LiDE 110
Scanner Type	Flatbed	Flatbed
Scanner Element	CIS (Color Contact Image Sensor)	CIS (Color Contact Image Sensor)
Light Source	3-color (RGB) LED	3-color (RGB) LED
Optical Resolution*1	4800 x 4800dpi (reflective documents)	2400 x 4800dpi (reflective documents)
Selectable Resolution	25 – 19200dpi	25 – 19200dpi
Scanning Bit Depth		
Grayscale	16-bit input 8-bit output	16-bit input 8-bit output
Color	48-bit input (16-bit for each color) 48 or 24-bit output (16-bit or 8-bit for each color)	48-bit input (16-bit for each color) 48 or 24-bit output (16-bit or 8-bit for each color)
Preview Speed*2		
Color A4 300dpi	Approx. 9sec	Approx. 14sec
Scan Speed*3		
Color A4 300dpi	Approx. 10sec	Approx. 16sec
Scanning Speed*4 (Reflective)		
Grayscale, B&W	11.1msec / line (4800dpi) 5.6msec / line (2400dpi) 2.8msec / line (1200dpi) 1.4msec / line (600dpi) 2.2msec / line (300dpi)	– 5.6msec / line (2400dpi) 2.8msec / line (1200dpi) 1.8msec / line (600dpi) 3.7msec / line (300dpi)
Color	33.2msec / line (4800dpi) 16.7msec / line (2400dpi) 8.4msec / line (1200dpi) 4.3msec / line (600dpi) 2.2msec / line (300dpi)	– 16.7msec / line (2400dpi) 8.4msec / line (1200dpi) 4.3msec / line (600dpi) 3.7msec / line (300dpi)
Maximum Document Size	A4 / Letter: 216 x 297mm (8.5 x 11.7in.)	A4 / Letter: 216 x 297mm (8.5 x 11.7in.)
Scanner Buttons (EZ Buttons)	5 buttons (PDF x 2, AUTOSCAN, COPY, E-MAIL)	4 buttons (PDF, AUTOSCAN, COPY, E-MAIL)
Interface	USB 2.0 Hi-Speed	USB 2.0 Hi-Speed
Operating Range		
Temperature	5 to 35°C	5 to 35°C
Humidity	10 to 90% RH	10 to 90% RH
Power Supply	Supplied via USB port	Supplied via USB port
Power Consumption		
Maximum during operation	Approx. 2.5W	Approx. 2.5W
Stand-by	Approx. 1.4W	Approx. 1.4W
OFF (USB bus power model; Suspend)	Approx. 11mW	Approx. 11mW
Environment (Plan)		
Regulation	RoHS (EU), WEEE (EU)	RoHS (EU), WEEE (EU)
Eco-Label	Energy Star	Energy Star
Dimensions (W x D x H)	250x 365 x 39mm	250x 370 x 40mm
Weight	Approx. 1.6kg	Approx. 1.6kg

Specifications are subject to change without notice.

*1. Optical resolution is a measure of maximum hardware sampling resolution, based on ISO 14473 standard.

*2. Preprocessing time is not included.

*3. Color document scan speed is measured with ISO/IEC 24712 Newsletter. Scan speed indicates the time measured between pressing the scan button of the scanner driver and the on-screen status display turning off. Scan speed may vary depending on system configuration, interface, software, scan mode settings, document size, etc.

*4. The fastest speed in Hi-Speed USB on Windows PC. Transfer time to computer is not included.

*5. Based on 1 frame of 35mm strip film.

*6. Based on 6 x 22cm film.

*7. Based on the maximum scanning resolution.





	LIDE 210	LIDE 110
CanoScan		
Scanner Type	Flatbed	Flatbed
Scanner Element	CIS (Color Contact Image Sensor)	CIS (Color Contact Image Sensor)
Light Source	3-color (RGB) LED	3-color (RGB) LED
Optical Resolution*1	4800 x 4800dpi (reflective documents)	2400 x 4800dpi (reflective documents)
Selectable Resolution	25 – 19200dpi	25 – 19200dpi
Scanning Bit Depth		
Grayscale	16-bit input 8-bit output	16-bit input 8-bit output
Color	48-bit input (16-bit for each color) 48 or 24-bit output (16-bit or 8-bit for each color)	48-bit input (16-bit for each color) 48 or 24-bit output (16-bit or 8-bit for each color)
Preview Speed*2		
Color A4 300dpi	Approx. 9sec	Approx. 14sec
Scan Speed*3		
Color A4 300dpi	Approx. 10sec	Approx. 16sec
Scanning Speed*4 (Reflective)		
Grayscale, B&W	11.1msec / line (4800dpi) 5.6msec / line (2400dpi) 2.8msec / line (1200dpi) 1.4msec / line (600dpi) 2.2msec / line (300dpi)	– 5.6msec / line (2400dpi) 2.8msec / line (1200dpi) 1.8msec / line (600dpi) 3.7msec / line (300dpi)
Color	33.2msec / line (4800dpi) 16.7msec / line (2400dpi) 8.4msec / line (1200dpi) 4.3msec / line (600dpi) 2.2msec / line (300dpi)	– 16.7msec / line (2400dpi) 8.4msec / line (1200dpi) 4.3msec / line (600dpi) 3.7msec / line (300dpi)
Maximum Document Size	A4 / Letter: 216 x 297mm (8.5 x 11.7in.)	A4 / Letter: 216 x 297mm (8.5 x 11.7in.)
Scanner Buttons (EZ Buttons)	5 buttons (PDF x 2, AUTOSCAN, COPY, E-MAIL)	4 buttons (PDF, AUTOSCAN, COPY, E-MAIL)
Interface	USB 2.0 Hi-Speed	USB 2.0 Hi-Speed
Operating Range		
Temperature	5 to 35°C	5 to 35°C
Humidity	10 to 90% RH	10 to 90% RH
Power Supply	Supplied via USB port	Supplied via USB port
Power Consumption		
Maximum during operation	Approx. 2.5W	Approx. 2.5W
Stand-by	Approx. 1.4W	Approx. 1.4W
OFF (USB bus power model; Suspend)	Approx. 11mW	Approx. 11mW
Environment (Plan)		
Regulation	RoHS (EU), WEEE (EU)	RoHS (EU), WEEE (EU)
Eco-Label	Energy Star	Energy Star
Dimensions (W x D x H)	250x 365 x 39mm	250x 370 x 40mm
Weight	Approx. 1.6kg	Approx. 1.6kg

Specifications are subject to change without notice.

*1. Optical resolution is a measure of maximum hardware sampling resolution, based on ISO 14473 standard.

*2. Preprocessing time is not included.

*3. Color document scan speed is measured with ISO/IEC 24712 Newsletter.

Scan speed indicates the time measured between pressing the scan button of the scanner driver and the on-screen status display turning off. Scan speed may vary depending on system configuration, interface, software, scan mode settings, document size, etc.

*4. The fastest speed in Hi-Speed USB on Windows PC. Transfer time to computer is not included.

*5. Based on 1 frame of 35mm strip film.

*6. Based on 6 x 22cm film.

*7. Based on the maximum scanning resolution.



SOUTH & SOUTHEAST ASIA REGIONAL HEADQUARTERS:

CANON SINGAPORE PTE. LTD.

1 HarbourFront Avenue #04-01 Keppel Bay Tower

Singapore 098632

Tel: 65-6799 8888

Fax: 65-6799 8882

www.canon-asia.com

BANGLADESH: **J.A.N. Associates**
Tel: 880-2-8611444
Fax: 880-2-8610410

NEPAL: **International Electronics Concern (P) Ltd.**
Tel: 977-1-4421991
Fax: 977-1-4421909

BRUNEI: **Interhouse Company**
Tel: 673-2-653001
Fax: 673-2-653003

PAKISTAN: **MBM International**
Tel: 9221-34302026-7
Fax: 9221-34386308

CAMBODIA: **i-Click (Cambodia) Pte Ltd**
Tel: 855-23-996638
Fax: 855-23-996639

SINGAPORE: **Canon Singapore Pte. Ltd.**
Tel: 65-6799 8888
Fax: 65-6221 7577
www.canon.com.sg

INDIA: **Canon India Pvt. Ltd.**
Tel: 91-124-4160000
Fax: 91-124-4160011
www.canon.co.in

SRI LANKA: **Metropolitan Computers (Pvt) Ltd.**
Tel: 94-11-2437797
Fax: 94-11-2448980

INDONESIA: **P. T. Datascrip**
Tel: 62-21-2664-8999
Fax: 62-21-6544811-13
www.canon.co.id

THAILAND: **Canon Marketing (Thailand) Co. Ltd.**
Tel: 66-2-3449999
Fax: 66-2-3449967-68
www.canon.co.th

MALAYSIA: **Canon Marketing (Malaysia) Sdn. Bhd.**
Tel: 603-78446000
Fax: 603-78450505
www.canon.com.my

VIETNAM: **Canon Singapore Pte. Ltd.**
Ho Chi Minh City Representative
Office & Showroom
Tel: 84-8-8200466
Fax: 84-8-8200477
www.canon.com.vn

MALDIVES: **SIMDI**
Tel: 960-324819
Fax: 960-318433

Hanoi Representative Office
Tel: 84-4-7711677
Fax: 84-4-7711678
www.canon.com.vn

MYANMAR: **Myanmar Golden Rock International Co., Ltd.**
Tel: 95-1-202092/3/4
Fax: 95-1-202079