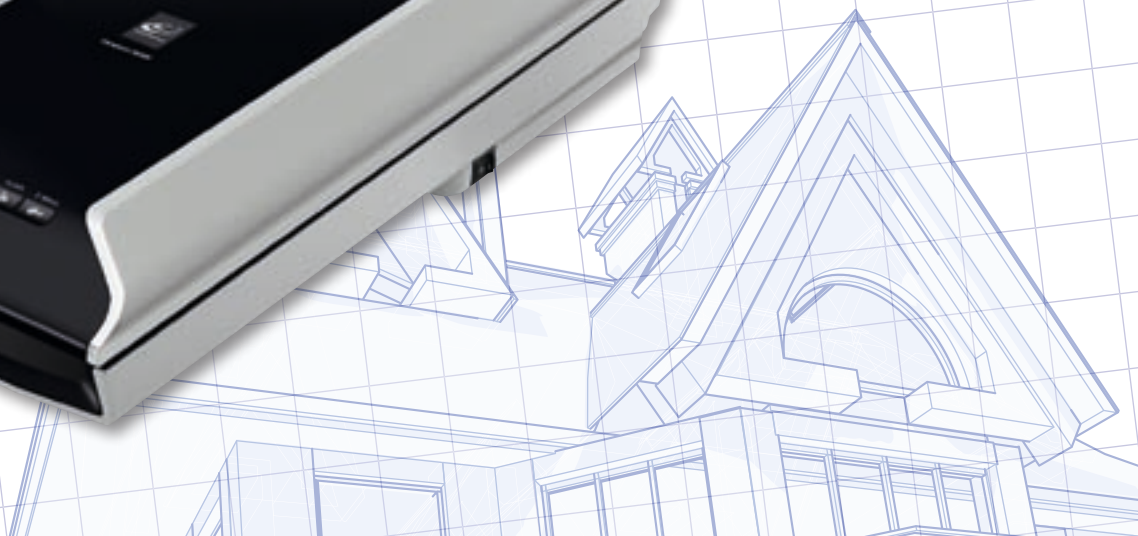


you can
Canon

Scanner Range Brochure 2009





Breathe new life into photos and documents with creative CanoScan solutions.

Canon's superb range of scanners is where advanced technology and great results meet value for money and effortless creativity. CanoScan scanners incorporate technologies that help to deliver high-speed scanning, impressive image resolutions and zero warm-up times, allowing operation in just seconds.

The CanoScan range has models to suit both inexperienced and professional users, and each scanner has the features to make it a truly creative tool – whether working with photos or documents. Dust and scratch reduction creates crisp, clear scans, while Auto Scan Mode is an intuitive function that automatically optimises settings to produce the best results from your originals.



CanoScan scanners are beautifully slim and compact and provide excellent functionality through up to seven EZ buttons, which are used for one-touch Copy, Scan, Email and PDF – the most common scanning functions. The scanners are also incredibly versatile, with some models offering 35mm film and slide scanning – perfect for photographers.

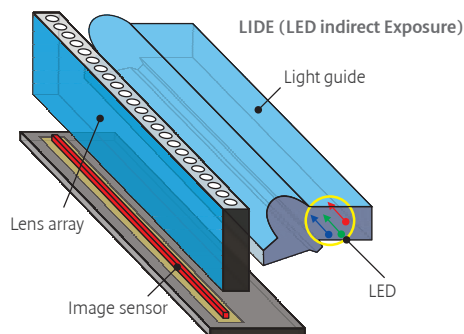


Scanner Technology



LIDE (LED INDIRECT EXPOSURE)

LIDE scanners use LED's, sensors and custom-made lenses in a unique way, placing sensor and light source very close together. The result is ultra-thin, compact and lightweight scanners that never sacrifice image definition for an instant. Using a single USB connection for both power and data, power consumption is low and installation easy. Just as important, they look great and take up minimal space.



ZERO WARM-UP TIME

High-luminance white LED lamps save time and energy. Conventional fluorescent lamps can require 30 seconds or more just to warm-up. LEDs have zero warm-up time so scanning can start immediately and shut down completely between scans.



USB BUS POWER

With their negligible appetite for energy, Canon's LIDE scanners are so efficient that they draw all the power they need from the USB data cable. This does away with the need for messy power cables and adapters.

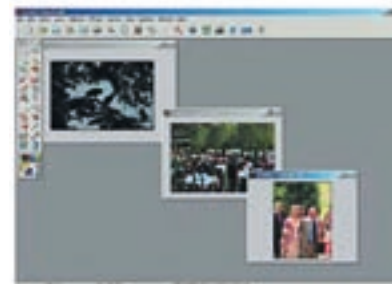
AUTO SCAN MODE

Auto Scan Mode lets you place several photos on the scanning surface at once (without worrying whether they're aligned) and scan them in one scan. Once scanned, the separately identified, straightened and cropped images are transferred to your computer as separate files.

Scan of 3 images with conventional scanner



Scan of 3 images with Auto Scan Mode



EZ BUTTONS

To keep things easy, every Canon scanner has up to 7 EZ buttons to simplify common scanner functions – such as scanning photos or film, scan to email, copying and scan to PDF. Up to four EZ buttons can be used to create single or multiple page PDF files directly from the panel. Once scanned, the software can detect and embed text to create word searchable documents. Using the CanoScan Toolbox or MP Navigator EX software*, further pages can be inserted directly into existing PDF files and page order can be changed with drag-and-drop simplicity.

* Software varies depending on scanner model.



EZ Buttons shown are from the CanoScan 8800F



FARE and QARE

Automatic retouching and enhancement of film and photos.

With functions such as dust and scratch removal to automatically correct flawed images, FARE for film and QARE for photo prints save hours of manual retouching and improve scan quality.



FARE

When scanning film, visible light is used to generate the image, but this also captures dust and scratches. FARE (Film Automatic Retouching and Enhancement) works by also using infrared (non-visible) light. Infrared light passes through the dye layers of film but not through the surface imperfections, creating a 'map' of defects. Intelligent software then corrects these defects, virtually eliminating the effect of dust and scratches. Invaluable with damaged and old film, FARE is also useful with new film, since it is virtually impossible to keep film pristine.

QARE

QARE uses intelligent software to provide similar functionality to FARE, but for reflective scans, such as photo prints.

COLOUR RECONSTRUCTION AND GRAIN REMOVAL

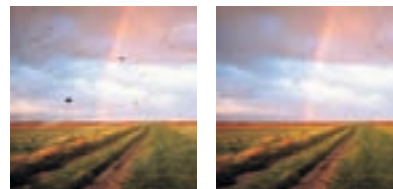
As well as removing imperfections such as dust and scratches, FARE and QARE can bring faded images back to life and reduce the effect of film grain. Colour Reconstruction restores hues and tints – transforming faded film and photo print scans to their original vivid colours. Grain Equalization and Management produces smoother tones by removing the noisy, speckled effect of film grain found in images captured with high ISO settings.

BACKLIGHT CORRECTION

Simply increasing brightness to improve images with heavy backlighting makes the entire image look 'washed out'. FARE and QARE's Backlight Correction function first detects which areas of the image need correction. Demonstrably superior image quality is then obtained by adjusting only the gamma of those areas, bringing out detail in darker areas without blowing out the correctly exposed sections of the image.

FILM AUTOMATIC RETOUCHING AND ENHANCEMENT – FARE

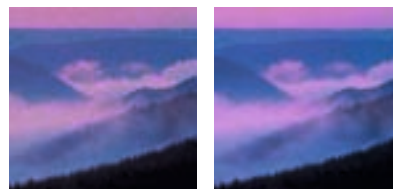
Dust and scratch removal



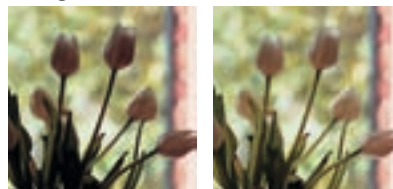
Fading Correction



Grain Correction



Backlight Correction





CanoScan 8800F

This top-of-range film, photo and document scanner is designed for photographers and creative or graphic agencies needing versatile scanner productivity. Advanced features ensure exceptional quality at the highest speed, with Zero Warm-up time.

- Quality – 4800 x 9600 dpi*; 48 bit colour depth
- Speed – A4, 300dpi scan in approx. 7 sec.; Zero Warm-up
- Film scanning – Adapter for 12x35mm filmstrip, 4x35mm mounted slides, 120 format (max. 6x22cm)
- Functions – Scan to PC, e-mail or PDF
- Design – Compact and slim
- Easy operation – 7 EZ buttons
- Multi-photo mode – Creates separate files in a single pass
- Auto image correction – FARE and QARE for automatic dust & scratch removal; generates usable scans from damaged originals
- Software – SilverFast SE, Adobe Photoshop Elements, MP Navigator EX, ArcSoft PhotoStudio, OmniPage, Presto! PageManager (PC only)

* See specifications

CanoScan 5600F

Outstanding photo, film and document scanning with advanced CCD technology. Professional-quality CCD scanner with 35mm film/slide holder delivering exceptional 4800x9600dpi resolution and 11-second 300dpi scans. Zero warm-up time offers instant operation for reflective scans.

- Advanced CCD technology photo, film and document scanner
- Premium-quality 4800x9600dpi resolution and 48-bit input/output
- 35mm film strip and slide scanning for photographers and creative users
- Zero warm-up time for reflective scans with high-brightness white LED for fast operation
- Produces 300dpi A4 scans in approximately 11 seconds
- 7 EZ buttons for the most popular tasks: Copy, Scan, Email and PDF
- Scan documents and photos automatically with Auto Scan Mode
- Hi-speed USB connection for improved productivity
- Built-in AC adaptor power supply

* See specifications



4800
x 9600dpi

19200 dpi
by Software

SCAN
approx.
7 sec.
Colour/A4/300dpi



4800
x 9600dpi

19200 dpi
by Software

SCAN
approx.
11 sec.
Colour/A4/300dpi





CanoScan LiDE 700F

With its ingenious 3-way design and 180° lid, the LiDE 700F brings high resolution scanning to work spaces of all sizes. For exceptional detail and enlargements, scan 35mm film at up to 9600dpi.

- Space-saving LiDE scanner with CIS sensor
- Attractive 3-way design with flip-out stand can be used in portrait, landscape or vertical positions
- Powered by High Speed USB 2.0 cable
- 9600x9600dpi film scanning for enlargements or exceptional detail
- 4800x4800dpi reflective scanning in 48bit colour
- Approx. 12 seconds* for A4 full colour scans at 300dpi
- Auto Scan Mode – selects perfect scan and save settings automatically
- Configurable EZ buttons enable fast, convenient operation for PDF, Copy, Scan, and Email
- Creates searchable PDF documents with over 15 language OCR
- Automatic QARE dust and scratch removal for photos

* See specifications

CanoScan LiDE 200

Affordable photo and document scanner bringing LiDE technology to the home user.

Intuitive LiDE scanner with 4 EZ buttons for Copy, Scan, Email and PDF. Delivers highquality 4800dpi resolution and 48-bit colour, with A4, 300dpi scan speeds of just 14 seconds.

- Photo and document scanning with 4800x4800dpi resolution and 48-bit colour
- High-speed A4 scanning at 300dpi in approximately 14 seconds
- Copy, Scan, Email and create PDFs using 4 EZ buttons
- Automatic reduction of dust and scratches for novice and expert users
- Intuitive scanning of all types of documents and photos with Auto Scan Mode
- No AC adaptor needed: single USB cable connection to a PC or Mac
- Compact size with an upright stand to reduce the desk space required
- Double-hinge design advanced Z-lid for scanning thick documents

* See specifications

9600
× 9600dpi

19200_{dpi}
by
Software

SCAN
approx.
12
sec.
Colour/A4/300dpi



4800
× 4800dpi

19200_{dpi}
by
Software

SCAN
approx.
14
sec.
Colour/A4/300dpi





CanoScan LiDE 100

Versatile and affordable LiDE scanner for the everyday user. This entry-level LiDE scanner features EZ buttons for easy operation of Copy, Scan, Email and PDF functions. Ease of use is enhanced by Auto Scan Mode and dust and scratch reduction.

- High image quality and accurate colours with 2400x4800dpi resolution and 48-bit colour
- Fast, 300dpi scanning for A4 scans in approximately 24 seconds
- 4 EZ buttons for Copy, Scan, Email and PDF
- Dust and scratch reduction for novice or expert users
- Auto Scan Mode for fast, intuitive scanning of photos and documents
- Single Hi-speed USB connection for easy installation and portability
- Space-saving, compact design for home or office
- Advanced Z-lid with double-hinge design for scanning thick documents

* See specifications

2400
x4800dpi

19200
by
Software

SCAN
24
approx.
sec.
Colour/A4/300dpi



USB One Plug



SCANNER SPECIFICATIONS CHART



CanoScan 8800F



CanoScan 5600F

| Type | Desktop Colour Flatbed Scanner with Film Adapter Unit | Desktop Colour Flatbed Scanner with Film Adaptor Unit |
|-------------------------------|-------------------------------------------------------------------------------------------------------------------------------------------------------------|---------------------------------------------------------------------------------------------------------------------------------------------------------------------------------------|
| Scanning element | CCD | CCD 6-line colour |
| Light source | White LED, Reflective and FAU | White LED - Reflective / Cold cathode fluorescent lamp |
| Optical resolution | 4800 x 9600 dpi ¹ | 4800 x 9600 dpi ¹ |
| Selectable resolution | 25 - 19200 dpi | 25 - 19200 dpi |
| Interface | Hi-Speed USB | Hi-Speed USB |
| Scanning Gradation Colour | | |
| Colour | 48 bit input / 48/24 bit output | 48 bit input -> 48/24 bit output |
| Greyscale | 48 bit input / 16 bit (Film scanning)/8 bit output | 48 bit input -> 16 bit (Film scanning) / 8 bit output |
| Maximum document size | A4/Letter (216 x 297mm) | A4 / Letter (216 x 297mm) |
| Scan Speed | | |
| Preview speed (Colour A4) | Approx. 3 sec ² | Approx. 3 sec ² |
| Scan speed (Colour A4 300dpi) | Approx. 7 sec ³ | Approx. 11 sec ³ |
| Scanning Speed | | |
| Colour | 1.0 msec./line (300 dpi), 12.1 msec/line (4800 dpi) ⁴ | 1.8 msec./line (300 dpi), 14.6 msec/line (4800 dpi) ⁴ |
| Greyscale | 1.0 msec./line (300 dpi), 12.1 msec/line (4800 dpi) ⁴ | 1.8 msec./line (300 dpi), 14.6 msec/line (4800 dpi) ⁴ |
| Black and White | 1.0 msec./line (300 dpi), 12.1 msec/line (4800 dpi) ⁴ | 1.8 msec./line (300 dpi), 14.6 msec/line (4800 dpi) ⁴ |
| Film Scanning Speed | | |
| Colour | 1.5 - 36.3 msec./line ⁴ | 1.8 - 58.4 msec/line ⁴ |
| Greyscale | 1.5 - 36.3 msec./line ⁴ | 1.8 - 58.4 msec/line ⁴ |
| B&W | 1.5 - 36.3 msec./line ⁴ | 1.8 - 58.4 msec/line ⁴ |
| Film Handling | 35mm strip (negative/positive)/12 frames Slide (negative/positive)/4 frames 120 format film/Max. 6 x 22cm (filmstrip only) | 35 mm strip (negative/positive)/6 frames Slide (negative /positive)/4 frames |
| Film Scanning Features | FARE level 3 (Film Automatic Retouching & Enhancement) with Reconstruction of Colour, Grain correction, Backlight correct | |
| Power supply | AC Adapter | AC adapter - built-in |
| Power Consumption | | |
| In operation (maximum) | Approx. 18W ⁵ | Approx. 19W ⁵ |
| Standby | Approx. 1.5W | Approx. 3.2W |
| Switch-off | Approx. 1.0W | Approx. 0.4W |
| Suspend | Approx. 0.4W | |
| Scanner (EZ buttons) | 7 buttons (PDF x 4, COPY, PHOTO/FILM, E-MAIL) | 7 buttons (PDF x 4, COPY, PHOTO/FILM, E-MAIL) |
| Dimensions | 272 x 479 x 100mm | 272 x 491 x 97mm |
| Weight | Approx. 4.2kg | Approx. 4.3kg |
| Operating Range | | |
| Temperature | 10° - 35°C | 10° - 35°C |
| Humidity | 10% to 90% RH (20% to 80% RH for film scanning), without condensation formation | 10% to 90% RH (20% to 80% RH for film scanning), without condensation formation |
| Operating System Requirements | Windows 2000/XP/Vista™ Mac OS X v10.2.8 - v10.5 | Windows Vista™, XP SP2, 2000 Professional SP4 / Internet Explorer 6.0 / CD-ROM drive / Display 1024x768 / Mac OS X v.10.3.9, v.10.4,v.10.5 / Safari / CD-ROM drive / Display 1024x768 |
| Software Included | ScanGear, MP Navigator EX, Solution Menu, ScanSoft OmniPage SE, ArcSoft PhotoStudio, Presto! PageManager (PC only), Adobe Photoshop Elements, SilverFast SE | ScanGear, MP Navigator EX, ArcSoft PhotoStudio |

SYMBOL GUIDE

9600
x 9600dpi
4800
x 9600dpi
2400
x 4800dpi
19200
dpi
by
Software
7
sec.
approx.
SCAN
Colour/A4/300dpi

Scanner optical resolution
The CCD and CIS systems of flat-bed scanning are available. Achieved maximum resolution of 9600(horizontal) x 9600(vertical) / 4800 x 9600 / 4800 x 4800 / 2400 x 4800 dpi. See endnotes for more info.

Software interpolation provides high-resolution data scanning at a maximum of 19200dpi.

Document Scan Speed (Colour/A4/300dpi)
High-speed document scanning is achieved by improving how data is read from the sensor.
See endnotes for more info.

48-bit
Input/Output



EZ Buttons



35mm Film



Medium Format

The 48-bit colour depth ensures your scans have exceptionally accurate colour reproduction.

EZ buttons provide one-touch operation of common scan tasks like PDF file creation or sending to your e-mail program.

Maximum 12 / 6 consecutive frames of 35 mm negatives or positives, or 4 consecutive frames of mounted slides, can be scanned.

Supports the Medium Format up to a maximum of 6 x 22cm.



USB One Plug



Advanced Z-lid



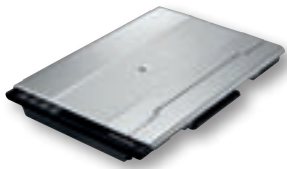


PDF

A power adapter is not required. You are ready to start scanning just as soon as the USB cable supplied is connected to your personal computer.

The cover lifts straight up, remaining parallel to the document table when scanning or copying magazines or thick documents. This allows thick documents to be pressed down directly from above when scanned.

Variable PDF files creation functions feature Searchable PDF files, Multi-Page PDF files or Auto Direction correction.

SCANNER SPECIFICATIONS CHART

| | | | |
|--------------------------------------|--------------------------------------------------------------------------------------------------------------------------------------------------------------------------------------------------------|----------------------------------------------------------------------------------------------------------------------------------------------------------------------------------------|----------------------------------------------------------------------------------------------------------------------------------------------------------------------------------------|
| |  |  |  |
| | CanoScan LiDE 700F | CanoScan LiDE 200 | CanoScan LiDE 100 |
| Type | Desktop Colour Flatbed Scanner with Film Adapter Unit | Desktop Colour Flatbed Scanner | Desktop Colour Flatbed Scanner |
| Scanning element | CIS | CIS | CIS |
| Light source | 3-colour (RGB) LED | 3-colour (RGB) LED | 3-colour (RGB) LED |
| Optical resolution | 9600x9600dpi (film) ¹ 4800x4800dpi (reflective documents) ¹ | 4800x4800dpi ¹ | 2400x4800dpi ¹ |
| Selectable resolution | 25 - 19200 dpi | 25 - 19200dpi | 25 - 19200dpi |
| Interface | Hi-Speed USB | Hi-Speed USB | Hi-Speed USB |
| Scanning Gradation Colour | | | |
| Colour | 48 bit input -> 48/24 bit output | 48bit input -> 48/24 bit output | 48bit input -> 48/24 bit output |
| Greyscale | 48 bit input -> 8 bit output | 16 bit input -> 8 bit output | 16 bit input -> 8 bit output |
| Maximum document size | A4/Letter (216 x 297mm) | A4 / Letter (216 x 297mm) | A4 / Letter (216 x 297mm) |
| Scan Speed | | | |
| Preview speed (Colour A4) | Approx. 9 sec. ² | Approx. 9 sec ² | Approx. 14 sec ² |
| Scan speed (Colour A4 300dpi) | Approx. 12 sec. ³ | Approx. 14 sec ³ | Approx. 24 sec ³ |
| Scanning Speed | | | |
| Colour | 2.4 msec./line (300 dpi) 33.5 msec./line (4800 dpi) ⁴ | 2.5 msec./line (300 dpi) 33.3 msec./line (4800 dpi) ⁴ | 5.5 msec./line (300 dpi) 16.9 msec./line (2400 dpi) ⁴ |
| Greyscale | 2.3 msec./line (300 dpi) 11.3 msec./line (4800 dpi) ⁴ | 2.3 msec./line (300 dpi) 11.1 msec./line (4800 dpi) ⁴ | 3.7 msec./line (300 dpi) 5.6 msec./line (2400 dpi) ⁴ |
| Black and White | 2.3 msec./line (300 dpi) 11.3 msec./line (4800 dpi) ⁴ | 2.3 msec./line (300 dpi) 11.1 msec./line (4800 dpi) ⁴ | 3.7 msec./line (300 dpi) 5.6 msec./line (2400 dpi) ⁴ |
| Film Scanning Speed | | | |
| Colour | 2.8 - 223.9 msec./line ⁴ | | 7.4 - 74.0 msec./line |
| Greyscale | 2.8 - 223.9 msec./line ⁴ | | 7.4 - 74.0 msec./line |
| B&W | 2.8 - 223.9 msec./line ⁴ | | |
| Film Handling | 35 mm strip (negative/positive)/1 frame | | 35 mm strip (negative/positive)/6 frames Slide (negative /positive)/4 frames 5 |
| Film Scanning Features | | | |
| Power supply | Supplied via USB port | Supplied via USB port | Supplied via USB port |
| Power Consumption | | | |
| In operation (maximum) | approx. 2.5W ⁵ | approx. 2.5W ⁵ | approx. 2.5W ⁵ |
| Standby | approx. 1.5W | approx. 1.4W | approx. 1.4W |
| Switch-off | approx. 11 mW | approx. 11 mW | |
| Suspend | approx. 11 mW | | approx. 11 mW |
| Scanner (EZ buttons) | 4 buttons (PDF, COPY, SCAN, E-MAIL) | 4 buttons (PDF, COPY, PHOTO, E-MAIL) | 4 buttons (PDF, COPY, PHOTO, E-MAIL) |
| Dimensions | 292 x 409 x 44mm | 250 x 370 x 40mm | 250 x 370 x 40mm |
| Weight | approx. 2.1kg | approx. 1.6 Kg | approx. 1.6 Kg |
| Operating Range | | | |
| Temperature | 5 degrees C to 35 degrees C | 5 degrees C to 35 degrees C | 5 degrees C to 35 degrees C |
| Humidity | 10% to 90% RH (20% to 80% RH for film scanning), without condensation formation | 10% to 90% RH without condensation formation | 10% to 90% RH without condensation formation |
| Operating System Requirements | Windows Vista™, Vista™ SP1, XP SP2/SP3, 2000 Professional SP4 / Internet Explorer 6.0 / CD-ROM drive / Display 1024x768 Mac OS X v.10.3.9, v.10.4,v.10.5 / Safari / CD-ROM drive / Display 1024x768 | Windows Vista™, XP SP2, 2000 Professional SP4 / Internet Explorer 6.0 / CD-ROM drive / Display 1024x768 Mac OS X v.10.3.9, v.10.4,v.10.5 / Safari / CD-ROM drive / Display 1024x768 | Windows Vista™, XP SP2, 2000 Professional SP4 / Internet Explorer 6.0 / CD-ROM drive / Display 1024x768 Mac OS X v.10.3.9, v.10.4,v.10.5 / Safari / CD-ROM drive / Display 1024x768 |
| Software Included | ScanGear, MP Navigator EX, ArcSoft PhotoStudio | ScanGear, MP Navigator EX, ArcSoft PhotoStudio | ScanGear, MP Navigator EX, ArcSoft PhotoStudio |

- Optical resolution is a measure of maximum hardware sampling resolution, based on ISO 14473 standard.
- Preprocessing time is not included.
- Colour document scanspeed is measured with ISO/IEC 24712 Newsletter. Scan speed indicates the time measured between pressing the scan button of the scanner driver and the on-screen status display turns off. Scan speed may vary depending on system configuration, interface, software, scan mode settings and document size etc.
- The fastest speed in Hi-Speed USB on Windows PC. Transfer time to computer is not included.
- Maximum consumption when scanning ISO/JIS-SCID N2 (printed on A4 plain paper with inkjet printer), as well as film (35mm and 120 roll) using available driver modes.

All specifications subject to change without notice. CanoScan and ScanGear are trademarks of Canon Inc. Microsoft, Windows, and the Windows logo are trademarks, or registered trademarks of Microsoft Corporation in the United States and/or other countries. All brand and product names are trademarks of their respective companies.

you can
Canon

Canon Inc
www.canon.com

Canon Europa
www.canon-europe.com

Canon (UK) Ltd
Woodhatch, Reigate
Surrey RH2 8BF
Telephone No: 01737 220000
Facsimile No: 01737 220022
www.canon.co.uk



Canon Ireland
Arena Road, Sandyford Industrial Estate
Dublin 18, Ireland
Telephone No: 01-2052400
Facsimile No: 01-2958141
www.canon.ie



Canon
Europe, Middle East & Africa
Conservation Partner

© 1986 Panda symbol WWF ® WWF Registered Trademark