



### Canon Sales Subsidiaries & Business Partners:

#### Bangladesh:

Flora Limited  
Adamjee Court Annex-2 (4th Floor),  
119-120, Motijheel Commercial Area,  
Dhaka-1000 Bangladesh  
Tel: +880-2-956 7846  
Fax: +880-2-955 0030  
www.floralimited.com

#### Brunei:

Interhouse Company  
P.O. Box 423, Seri Complex BA1779  
No. 5-7, Bunut Jaya Complex Spg. 574, Kim  
7 1/4, Jalan Tutong Bandar Seri Begawan  
BF1320 Negara Brunei Darussalam  
Tel: 673-2-653 001  
Fax: 673-2-653 003

#### Cambodia:

Royal Cambodia Co. Ltd.  
#437 Preah Monivong Blvd.  
Phnom Penh, Kingdom of Cambodia  
Tel: 855-23-428955  
Fax: 855-23-722961

#### Hong Kong:

Canon Hong Kong Co. Ltd.  
Domestic Sales Office  
19/F, The Metropolis Tower,  
10 Metropolis Drive  
Hung Hom, Kowloon, Hong Kong  
Tel: 852-2170 2888  
Fax: 852-2723 3943  
www.canon.com.hk

#### India:

Canon India Private Limited  
2nd Floor, Tower A & B  
Cyber Greens, DLF Phase III  
Gurgaon - 122022  
Haryana, India  
Tel: 91-124-516 0000  
Fax: 91-124-516 0011  
www.canon.co.in

#### Indonesia:

PT Samafitro  
Jalan Ir. H Juanda No.8  
Jakarta 10120 Indonesia  
Tel: 62-21-345 5521  
Fax: 62-21-384 4271  
www.samafitro.co.id

#### Malaysia:

Canon Marketing (Malaysia) Sdn. Bhd.  
Block D, Peremba Square  
Saujana Resort Section U2, 40150 Shah Alam  
Selangor Darul Ehsan, Malaysia  
Tel: 03-7844 6000, 03-7845 0055  
Tel: 03-7845 0505  
www.canon.com.my

#### Maldives:

SIMDI Company Pvt Ltd.  
Manaam Building  
2/1 Neelofaru Magu  
20-129 Male  
Rep. of Maldives  
Tel: 960 3334421  
Fax: 960 3334424

#### Myanmar:

Accel International Co. Ltd.  
FJV Commercial Centre  
Level 6, No. 422-426  
Strand Road, Botataung Township  
Yangon, Myanmar  
Tel: 951-202 092 to 96  
Fax: 951-202 079

#### Nepal:

International Electronics Concern (P) Ltd.  
Kha 14 1st Floor, Haratibhawan, Putalisadak,  
Ramshah Path, Kathmandu, Nepal  
Tel: +977-1-442 1991  
Fax: +977-1-442 1909

#### Pakistan:

Shirazi Trading Company (Pvt) Ltd.  
8th Floor, Adamjee House I.I. Chundrigar Road  
Karachi, Pakistan  
Tel: 92-21-241 7737  
Fax: 92-21-242 0417  
www.shirazitrading.com.pk

#### Philippines:

Canon Marketing (Philippines) Inc.  
Marvin Plaza Building  
2153 Don Chino Roces Avenue  
Makati City Metro Manila Philippines  
Tel: 632-884 9000  
Fax: 632-894 4174  
www.canon.com.ph

## SOUTH & SOUTHEAST ASIA REGIONAL HEADQUARTERS

CANON SINGAPORE PTE. LTD.  
1 HarbourFront Avenue #04-01  
Keppel Bay Tower, Singapore 098632  
Tel: 65-6799 8888 Fax: 65-6799 8882  
www.canon-asia.com

#### Sri Lanka:

Metropolitan Communications (Pvt) Ltd.  
85 Braybrooke Place Colombo 2  
Sri Lanka  
Tel: 94-11-243 7797  
Fax: 94-74-244 8980

#### Thailand:

Canon Marketing (Thailand) Co. Ltd.  
10th Floor Bangkok City Tower  
179/34-45 South Sathorn Road  
Bangkok 10120  
Tel: 66-0-2344 9999  
Fax: 66-0-2344 9910  
www.canon.co.th

#### Vietnam:

Canon Singapore Pte. Ltd.  
Ho Chi Minh City Representative Office  
Unit 437 - 439 - 441 Hai Ba Trung Street  
Ward 8, District 3, Ho Chi Minh City, Vietnam  
Tel: +(848) 820 0466  
Fax: +(848) 820 0477

Hanoi City Representative Office  
Unit 601 & 602, Viet Au Building  
205 Giang Vo Street, Dong Da District  
Hanoi, Vietnam  
Tel: 84-4-5121 033  
Fax: 84-4-5121 022  
www.canon.com.vn



L 1 6 0 / L 1 4 0

DEALER'S STAMP

Canon Singapore Pte. Ltd. 2007 - Printed in Singapore

0115W391

# Canon

Delighting You Always

Laser Multifunction Printer

## THE NEW & COOL BASIC



### ECO-FRIENDLY

- Energy Star-RoHS compliant
- Minimal power consumption
- Lower operating costs
- Built of non-toxic substances

### EFFICIENT

- Virtually no warm-up time
- Copying speed of 12cpm
- Printing speed of 14ppm (L160)
- Unique Page Composer function (L160)

### EASY TO OPERATE

- 30-sheet Auto Document Feeder
- Large fax memory
- Backlit LCD panel
- User-friendly one-touch buttons
- Hassle-free FX9 cartridge

**Canon**  
Delighting You Always



Business *can* be simple

L 1 6 0 /  
L 1 4 0



## No warm-up time and lower energy costs

The Energy Star-compliant L160/L140 employ Canon's **On-Demand SURF (Surface Rapid Fixing) Printing Technology**, which means virtually no waiting and warm-up time is required. This also reduces energy consumption and lowers operating costs.



They also feature **hassle-free, FX9 All-in-one cartridges, Dual Access** and **shortcut buttons** for convenient usage.



## Save costs while caring for the environment

Send the message that you care for the environment by choosing the L160/L140. These RoHS-compliant devices do not contain any harmful substances that can pollute your working environment and cause harm to the human body.



## On 24/7 without the pinch

If you receive faxes round the clock, utility bills are surely a concern. With the L160/L140's power consumption of **approximately 3W** in Sleep Mode, you can rely on these machines to keep operating costs low and help you save big time in the long term.

## Compact in size but not in memory

The L160/L140's new operational panel with an LCD backlight improves clarity, while their compact design is suitable for even the most space-challenged of offices. They also each have a large fax memory capacity of up to **346 pages**, so you won't miss a fax even when you run out of paper.



## Your versatile office partner

Keys to a successful business are good time management, efficiency and clear communication – and you can trust the L160 and L140 to handle these well, through quality documents and reliable sharing techniques. The L160 is also a dependable printer stand-in should your office printer break down.

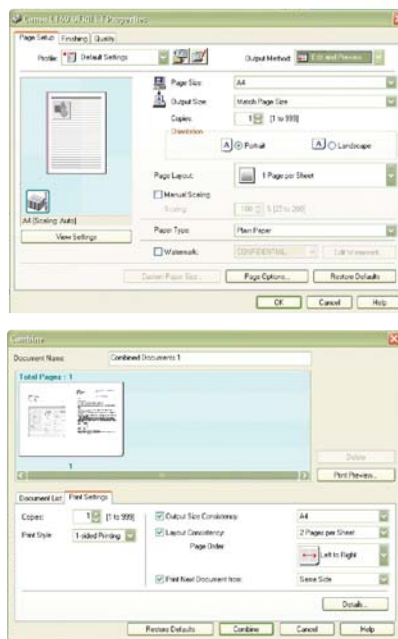
## Fast, Clear & Efficient

A **Super-G3** fax modem and UHQ™ image processing system ensures fast, clear transmissions at **3 secs per page**. Plus, a manual zooming function allows images to be enlarged / reduced between **50%** and **200%**. In addition, you can copy multi-page documents at a fast **12 cpm** and send lengthy faxes, thanks to the built-in **30-sheet Auto Document Feeder**. In addition, there is a **Confidential Fax Transmission** feature which allows documents to be sent to a confidential mailbox, thereby improving security.

## Compose your pages with Canon PDL

The L160 also employs the UFR II Lite printer language system, which makes it **compatible with operating systems such as Windows 2000, XP and Vista** as well as **Mac-based systems**. Plus, its improved printing speed can churn out documents at a fast **14 pages/minute** with virtually no waiting time.

Best of all, the L160 features Canon's Unique **Page Composer** printing feature, which allows you to compile files of different applications into a single document before printing. It can also accommodate a wide range of page sizes – including unusual sizes such as foolscap – to suit various business needs.



## Be smart, be genuine

Canon's **FX9 all-in-one cartridges** make cartridge replacement as easy as 1-2-3 – all parts that require frequent maintenance such as the drum, charging unit, cleaner and developer along with the toner reservoir are integrated into a single unit for hassle-free replacement. Genuine Canon consumables also ensure your Canon devices are protected and that you get **optimum performance** and **warranty assurance** from Canon.



L 1 6 0 / L 1 4 0

## Specifications

Fax	
Programmable Numbers	
One-Touch Dials	15 locations
Coded Dials	100 locations
Group Dials	15 x 50 locations
Programmable # of Digit	Approx. 50
Paper Handling	
Auto Document Feeder	30-sheet (A4) / 10-sheet (LGL)
Auto Sheet Feeder (Tray)	150-sheet (Up to LGL, 80g/m)
Output Tray Capacity	100-sheet (A4 or LTR, 75g/m)
Print Width	Up to LGL
Paper Size	A4 / LGL / LTR / 16K / Folio / Foolscap
Paper Weight	64 - 128g/m
Fax Transmission Features	
Fax Modem	Super-G3, 33.6kbps
Transmission Speed	Approx. 3 seconds/page
Compression/Coding System	MH, MR, MMR
Fax Resolution (Tx/Rx)	8 x 3.85 (Standard) 8 x 7.7 (Fine/Photo) 8 x 15.4 (Super Fine) 600 x 600dpi
Fax Printing Resolution	256 level
Fax Scanning Speed	2.6 sec / page (Std, Fine)
Greyscale Level	256 level
Density Adjustment level	9 levels
Transmission Header	Yes
Error Correction Mode	Yes
Memory Transmission	Yes
Direct Transmission at Full Memory	No
Sequential Broadcasting	131 locations
Delayed Transmission	Yes (131 locations, 1 pre-set time)
Confidential Transmission	Yes (by sub-address)
Relay Broadcasting	Yes (By sub-address)
Polling	Yes (Tx & Rx)
Memory Polling	Yes (by subaddress, password)
Selective Polling	Yes (by subaddress, password)
Error Retransmission	No
Fax Reception Features	
Receiving Mode	Fax Only, Manual, Answering Machine, Fax / Tel Auto Switch
Reception Footer	Yes
Auto Receive Image Reduction	Yes (75-100%)
Collation	Yes
DM Preventive Function	Yes
Caller ID	No
Remote Reception	Yes (code: 25)
Fax Memory Reception	Up to 346 pages (5.7MB)
Memory Backup	No
Auto Memory Output	Yes
Memory Lock Reception	Yes (time-setting possible)
Dual Access	Yes (256 pages max reservation)
Extension Phone Hook-up	Yes
Answering Machine Hook-up	Yes
On-Hook Key	Yes
Reception Mode Key	No
System Management Password	Yes
Low Toner Continue Printing	Yes
Report List	
Activity Report	Yes (Result, Non-Delivery, Management); 60 transactions/list
Reception Report	Yes
Transmission Report	Yes

Copy	
Copy Speed	12cpm (A4) / 13cpm (LTR)
Multiple Copies	1 - 99 copies
Zooming Ratio	50 - 200%
Exposure Adjustment	9 levels
Auto Background Control	Yes
Copy Resolution	Text, Photo, Text Photo
Copy Scan Resolution	200 x 300dpi
Reserved Copy	No
Energy Saver Key	Yes
Collate Copy	Yes

PC Print (L160 only)	
Printing Method	Laser Beam Printing (Monochrome)
Printing System	UFR II Lite
Connectivity	USB 2.0 Hi-speed
Print Speed	14 ppm
Printing Resolution	600 x 600dpi
Image Memory	16MB
OS Compatibility	Win 2000 / XP / Vista / Mac OS X

General Specifications	
Main RAM	16MB
USB Connectivity	L160 only
LCD Backlight	Yes
Power Consumption	Sleep: approx. 3w Standby: < 8w Max: < 700w
Power Source	220-240V / 50-60Hz
Machine Dimension (W x D x H)	400 x 386 x 221mm
Weight	approx. 8kg (without cartridge)
Languages	16 languages
Telephone	Optional Handset Kit
Acoustic Noise Level	Standby: 40 dB > In Operation: 66 dB <
Energy Saving Mode	Yes (Energy Star®)
RoHS Compliant	Yes
Consumables	FX9 cartridge (2000 pages* yield)

\* Machine comes with Starter FX9 cartridge, yield up to 1000 pages  
\* Yield is based on A4, 5% coverage



All information contained in this brochure is correct at the time of printing. Some information could become dated due to product improvements or other changes. Canon bears no responsibility for any discrepancies.