

Panasonic

ideas for life

KX-FLB853ML



- Flexible 3-Bin Sorter
- Up to 18 ppm Print Speed
- 600 x 600 dpi Print Resolution
- Up to 18 cpm Copy Speed
- 33.6 kbps Fax Modem
- Flatbed Colour Scanner



Multi-Function

All-in-One SOHO Power

A simple solution for all of your office document processing demands, the KX-FLB853ML high-speed laser fax also serves as a 18-cpm digital copier, flatbed colour scanner, and even an 18-ppm PC printer. No more single-purpose equipment is required. It does all your document jobs with a single compact unit — Panasonic Does.

Laser Printer

- 18-ppm Print Speed
- 600 x 600 dpi Resolution
- USB Interface
- Works with Microsoft® Windows® 98/Me/2000/XP
- Network Print Capability*1

Flatbed Copier

- Enhanced 600 dpi Laser Copy Quality
- Up to 18-cpm Copy Speed
- Multiple Copies: up to 99 from One Original
- Enlarge up to 200%, Reduce up to 50%

Laser Fax

- High Speed 18 ppm Print Speed
- 250-Sheet Capacity Input Tray
- 33.6 kbps Fax Modem
- Automatic Document Feeder (50 Sheets)
- Resolution: Standard/Fine/Super Fine/Photo
- 10 MB Document Memory Total
 - (8 MB: Reception Memory with backup, up to 630 pages
 - 2 MB: Transmission Memory, up to 150 pages)*2,*3
- 64-Level Photo Resolution
- Dual Access with Reserved Transmission
- Error Correction Mode (ECM)
- PC Fax
- Junk Fax Prohibitor (up to 10 numbers)
- Caller ID Compatible*4

Colour Scanner

- Colour Scanning with Flatbed and Automatic Document Feeder
- 9600 dpi (Interpolated) Scanning Capability
- Scan to PC as PDF, JPEG or TIFF
- Network Scan Capability*1
- Easy-to-Use Image Viewer



KX-FLB853ML

Laser Printer

Multi-Function with USB 2.0

The KX-FLB853ML comes standard with a USB 2.0 interface for easy connection to a PC. And to make sure you can enjoy all the benefits of PC connectivity, the bundled "Multi-Function Station" launcher software allows easy setup and selection of multiple functions (Printer, Scan-to-PC, PC Fax, Setup, etc.)*⁵. Helpful descriptions



displayed on your monitor make it easy to choose the function you need.



Quality Laser Printing

The KX-FLB853ML lets you enjoy the professional look of laser printing. The laser printer function helps assure high quality reproduction at 600 dpi x 600 dpi resolution in every document and drawing you want to print or copy.

High-Speed 18-ppm Laser Printing

The KX-FLB853ML boasts high-speed printing and copying at speeds of up to 18 pages per minute. Printing start-up is also quick thanks to shorter warm-up time of 15 seconds.



Network Printer (Option)

With the optional KX-FA102E installed, you can upgrade the KX-FLB853ML to a Network Printer/Scanner. When the Flexible 3-Bin Sorter is set for each function or each workgroup, the output paper is automatically separated for more improved workflow efficiency.

High Yield Toner

The standard toner cartridge can print/copy up to 5,000*^{2,*6} sheets, more than enough to keep your business going for an extended period of time without a refill.

250-Sheet Paper Tray

Since the standard paper tray can hold up to 250 sheets, you don't have to worry about running out of paper out even during a high-volume print or fax job. And if you still need more paper capacity, an optional 500-sheet Paper Tray is also available. For added flexibility, a Multi-Purpose Tray is provided. This allows you to manually feed up to 30 sheets of various sizes (A4/Letter/Envelope/OHP/Label).



Multi-Purpose Tray

Flatbed Copier

Flatbed Design

In addition to the 50-sheet Automatic Document Feeder, a built-in flatbed allows you to scan, copy, or fax a variety of originals in different shapes or sizes such as magazines, newspapers, business cards, etc.



High-Quality Image Reproduction

A built-in CCD (charge-coupled device) image sensor makes possible high-speed scanning and high-resolution image reproduction, as well as providing the variable focus capability needed for clear copying of books or magazines even when the spine is raised slightly above the glass plate.

High-Resolution Digital Copier

With resolutions of up to 600 dpi x 600 dpi, sharp, clear copies are assured. Multiple copies of up to 99 sheets are possible and, when one bin of the Flexible Sorter is set for Copy, the copied paper is output independently without being mixed with printer or fax output.

18-cpm Copy Speed

The KX-FLB853ML delivers high speed copying of up to 18 copies per minute, with a warm-up time of 15 seconds for more efficient document workflow.



Laser Fax

33.6 kbps High-Speed Fax Modem

The Panasonic laser fax is designed for fast, efficient fax transmission at speeds up to 33.6 kbps (4 seconds per page*2,*6). This minimises costs when you're sending a long-distance fax.

10MB Document Memory Total

This unit can store up to 150*3 pages in its built-in memory. Ideal for broadcasting multi-page documents to multiple locations, this feature also enables out-of-paper reception of up to 630*3 pages.

Dual Access Operation

This intelligent function quickens the pace by letting you run two operations at the same time. For instance, while the KX-FLB853ML is busy sending or receiving a memory-based fax, you can store additional documents to send later.

64-Level Halftone with Digital Image Processing

You can send or copy everything from family photos to company documents in almost their original beauty, with the clarity and detail of 64 level halftone reproduction.

Colour Scanner

Colour Scanning with Flatbed and ADF

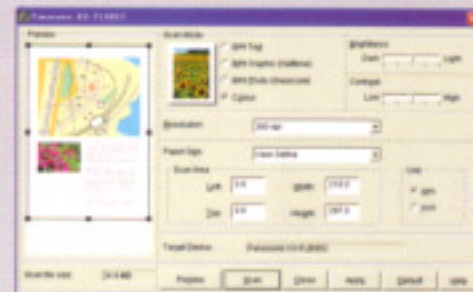
The KX-FLB853ML allows you to scan documents in colour or black-and-white at a high resolution of 600 dpi x 1200 dpi when a flatbed platen is used, or 600 dpi x 600 dpi with an Automatic Document Feeder. (Max. scanning resolution of 9600 dpi x 9600 dpi is available when interpolation is used.) Up to 50 sheets at a time can be fed via the ADF.

High-Quality Scanning

To capture true-to-life high-quality images, the KX-FLB853ML outputs scanning images with 24-bit colour gradation (48-bit input), or 8-bit black & white gray scales (16-bit input).

Image Processing Software

The KX-FLB853ML is provided with convenient PC software. With the launcher software installed on your PC, you can easily access multiple functions from the graphical menu. With the "Viewer (Scan)" menu, you can choose Page View, Reduction, Rotate, Duplicate, and Cut and Paste functions. When the optional LAN board is added, the KX-FLB853ML can be used as a network scanner, enabling "Scan-to-PC" that transfers the scanned data to any PC on the LAN.



reliability

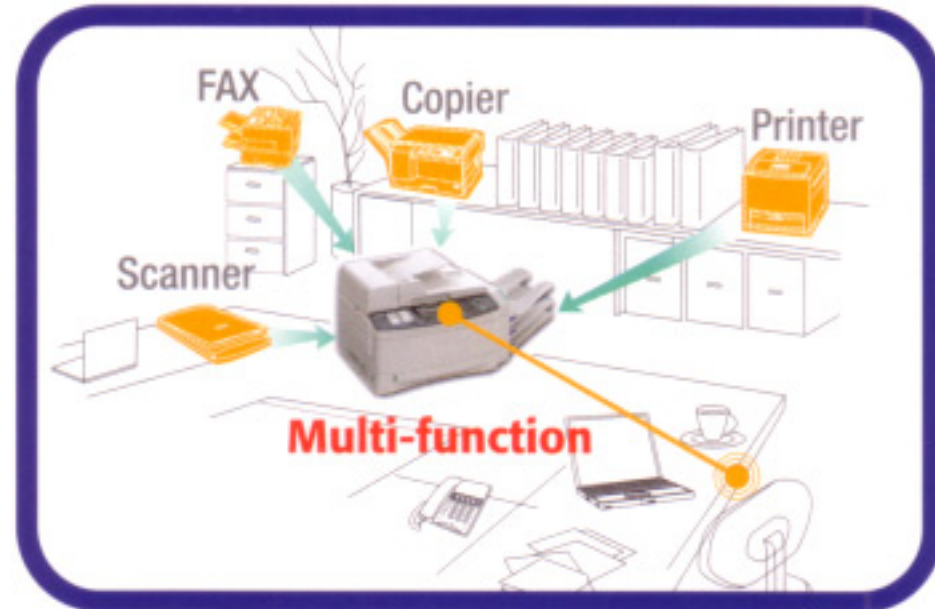
Expandable Design

The standard model comes with 250-sheet paper tray and 30-sheet multi-purpose tray. When the optional 500-sheet paper tray (KX-FA101E) is added, paper capacity can be increased to a total of 780 sheets.

The optional Network Board KX-FA102E turns the KX-FLB853ML into a more versatile network printer/scanner that can be easily connected to your existing Ethernet LAN network.

Efficiency

"4-in-1" multifunction design⁵ dramatically improves business efficiency for every document-related task from faxing and copying to scanning and printing.



Flexible

Unique 3-bin flexible sorter allows versatile use – function by function, user by user, etc.



3-Bin Flexible Sorter

Unlike any conventional multifunction machines, the KX-FLB853ML comes with unique 3-bin paper output trays. The Flexible Sorter allows you to use three trays for three different uses, such as fax reception, copying output and printout, or for three different workgroups. When connected to the LAN, User Bin selection is possible from a networked PC.

Expandable

Along with your business needs, you can expand the paper capacity or even LAN network capability¹.

Network Expandability

Designed to be expandable, the KX-FLB853ML can be connected to your local network. When you add the optional LAN Board, you can use it as a network printer or network scanner to enable data to be shared by all your staff. The bundled software makes it possible to send faxes directly from your desktop (PC-Fax)⁵.

USB



LAN



Options



KX-FLB853ML with KX-FA101E



KX-FA101E Lower Input Tray (500 sheets)



KX-FA102E LAN Board



KX-FA103A Handset Unit

Consumables



KX-FA85E
Toner Cartridge
(5,000 pages)*2,*6



KX-FA86E
Drum Unit
(Max. 10,000 pages)*7

Service Parts

KX-FA104E Maintenance Kit

KX-FLB853ML Specifications

General Function

Type:	Desktop
Printing Process:	Laser
Flexible Sorter:	Flexible 3 bins
Multi-Purpose Tray:	30 sheets
Standard Memory Capacity:	32 MB
PC Interface:	USB 2.0
Scanning System:	CCD image sensor, fixed flatbed
Caller ID Ready*4	FSK
Dialing Mode:	Tone/pulse
Automatic Document Feeder:	50 sheets
Paper Tray:	250 sheets
Multi-Purpose Tray:	30 sheets
Optional Tray:	500 sheets
Warmup Time:	Approx. 15 seconds (20°C)

Printer Function

PC Interface:	USB 2.0
Printing Speed:	18 PPM
Printing Resolution:	600 dpi x 600 dpi
Compatible OS:	98/Me/2000/XP
Emulation:	GDI
Paper Handling:	A4/letter/envelope

Copier Function

First Copy Time:	Approx. 17 seconds (A4)
Memory Copy Speed:	18 CPM
Resolution:	600 dpi x 600 dpi
Multi-Copy:	Up to 99 copies
Zoom (variable):	50-200 in 5 % increments
Collate:	Sorter function

Fax Function

Compatibility:	ITU T G3
Paper Handling:	A4
Scanning Width:	208 mm
Modem Speed:	33.6 kbps with automatic fallback
Transmission Speed:	Approx. 4 seconds per page*2,*6 in ECM-MMR memory transmission
Compression System:	MH / MR / MMR
Resolution:	Standard/fine/super fine/halftone
Halftone:	64 levels
Memory Transmission:	Max. 150 pages*3
Memory Reception:	Max. 630 pages*3

Scanner Function

Colour Scanning:	Input 48 bits, output 24 bits
Monochrome Scanning:	Input 16 bits, output 8 bits
Scanning Resolution:	600 dpi x 600 dpi (ADF) 600 dpi x 1200 dpi (Flat-Bed) 9600 dpi x 9600 dpi (interpolated)
Scanner Driver:	TWAIN 18

Network Compatibility (Option)

Optional LAN Board:	KX-FA102E
Network Connectivity:	10BASE-T/100BASE-TX
Network Operation:	Printer, Scan-to-PC

Power Consumption:

Standby:	Approx. 11 W
Transmission:	Approx. 28 W
Reception:	Approx. 400 W
Copy:	Approx. 430 W
Maximum:	Approx. 900 W when the fuser lamp turns on
Power Source:	AC 220 - 240V, 50/60 Hz
Dimensions (W x D x H):	773 mm x 444 mm x 312 mm
Weight:	Approximately 18.0 kg

*1 When the optional LAN Board (KX-FA102) is connected

*2 Based on ITU-T No.1 test chart

*3 Max. 630 pages for out-of-paper reception. Max. 150 pages for memory transmission.

*4 Requires subscription to fee-based phone company service.

*5 Available when connected to PC running Microsoft® Windows® 98/Me/2000/XP. Multi-function software is included.

*6 5% coverage

*7 The drum longevity is tested by 20-sheet continued printout intervals.

Microsoft and Windows are registered trademarks of Microsoft Corporation in the United States and/or other countries

Panasonic®

Panasonic Malaysia Sdn Bhd (26975-W)

Lot 1, Persiaran Budiman, Seksyen 23,
40300 Shah Alam, Selangor Darul Ehsan, Malaysia.

Tel: 603-55437000

Fax: 603-55495700

Web site: <http://www.panasonic.com.my>

Global Web Sites: <http://www.panasonic.co.jp/global>

Design and specifications are subject to change without notice. 0M0206SK-KX-FLB853-LT.ML